

614-737-8850 • 1-877-898-8850

Smart Shelving

Discover the flexibility of a shelving system that customizes to your needs

Smart Shelving from Amtekco combines the reliable, high-performance materials you expect, with the ability to create an economical, custom system that adapts to your unique storage requirements.

With our quick-release shelf mechanism, you can easily reposition each shelf — no tools required. Need more room for taller items? No problem. Need space for temporary products? You can create it. When you need to organize, Smart Shelving makes maximum use of even the tightest spaces.

Because the Smart Shelving system doesn't use posts, you'll have quick access when stocking, and be able to see all your essentials at a glance. The Smart Shelving system is easy to clean, simple to install and ready to configure.

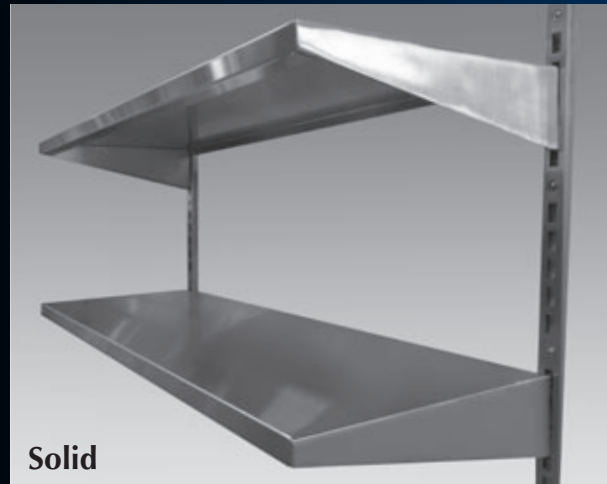
Perfect for long-term durability and maintenance.

The upright wall-mounted support brackets are made of 12 gauge 300 series stainless and the shelving is made of 16 gauge 300 series stainless, making them both durable and sanitary.

Smart Shelving is available in solid, slatted and perforated styles.

Typical Applications Include:

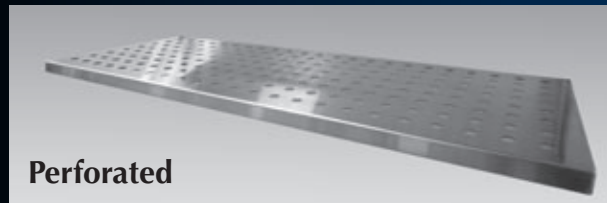
- Any open wall
- Walk-in refrigerators
- Walk-in freezers
- Rooms where full wash-down is required



Solid



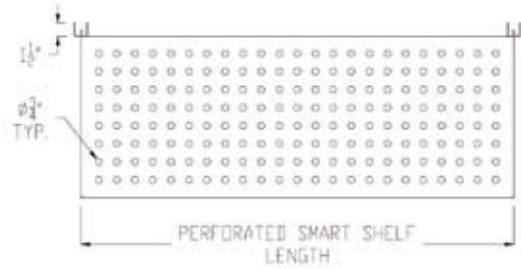
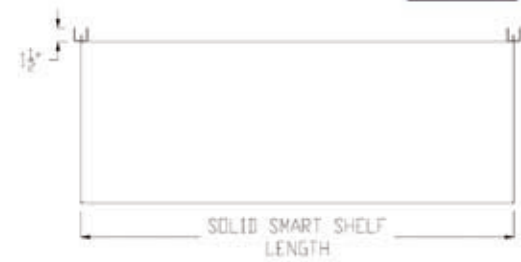
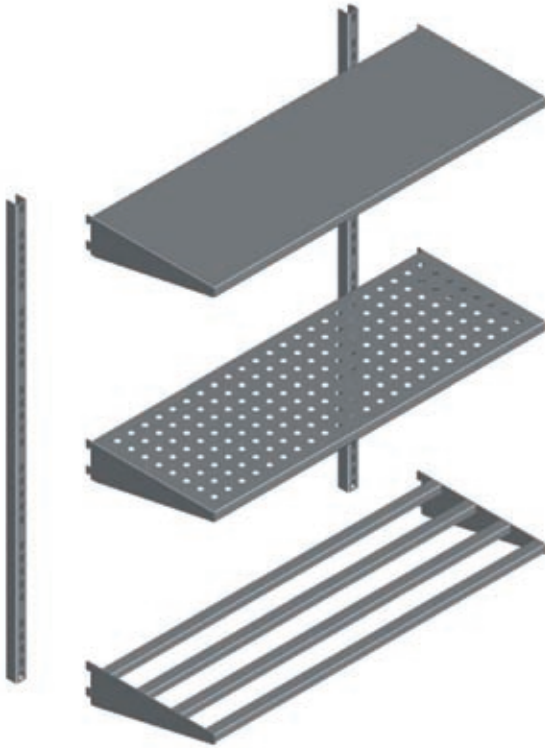
Slatted



Perforated

Smart Shelving Quick Facts:

- Easy to assemble with adjustable heights
- No front posts for easy access
- Quick-release mechanisms for effortless adjustments
- Tough, rust-resistant finish
- Lifetime guarantee against corrosion
- Simple to clean
- Creates easy access to the floor
- Makes maximum use of small spaces



CONSTRUCTION:

Solid Shelf

- ◆ 16 GA. 300 Series Stainless Steel w/ Reinforced Ends

Perforated Shelf

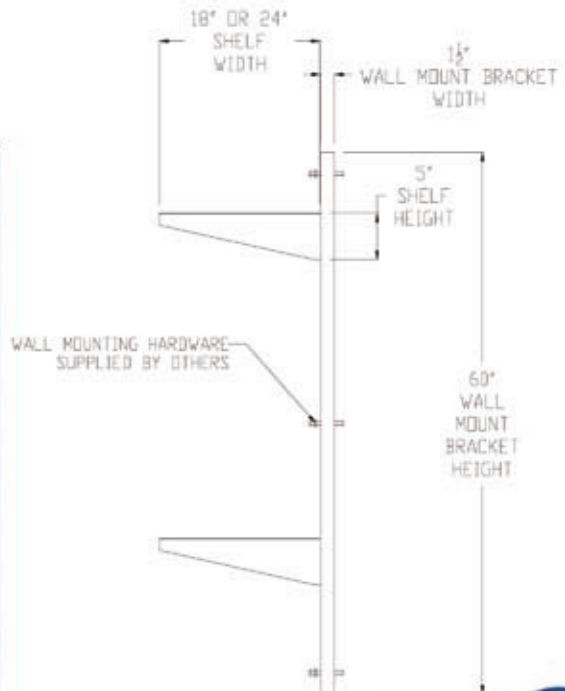
- ◆ 16 GA. 300 Series Stainless Steel w/ Reinforced Ends

Slatted Shelf

- ◆ 16 GA. 300 Series Stainless Steel w/ Reinforced Ends

Upright Wall Mount Support Bracket

- ◆ 12 GA. 300 Series Stainless Steel



SMART SHELVING COMPONENTS						
MODEL#	QTY	O.A. LENGTH	O.A. WIDTH	OVERALL HEIGHT	WEIGHT (LBS)	WEIGHT CAP. (LBS)
UPRIGHT WALL MOUNT SUPPORT BRACKET						
SSH60UWM		1 1/2"	1 1/2"	60"	7	NA
SSH72UWM		1 1/2"	1 1/2"	72"	10	NA
SSH84UWM		1 1/2"	1 1/2"	84"	12	NA
SOLID SMART SHELVING						
SSHSLD136		36"	18"	5"	19	600
SSHSLD148		48"	18"	5"	21	600
SSHSLD160		60"	18"	5"	23	600
SSHSLD236		36"	24"	5"	20	600
SSHSLD248		48"	24"	5"	22	600
SSHSLD260		60"	24"	5"	24	600
PERFORATED SMART SHELVING						
SSHFPD136		36"	18"	5"	19	600
SSHFPD148		48"	18"	5"	21	600
SSHFPD160		60"	18"	5"	23	600
SSHFPD236		36"	24"	5"	20	600
SSHFPD248		48"	24"	5"	22	600
SSHFPD260		60"	24"	5"	24	600
SLATTED SMART SHELVING						
SSHSLT136		36"	18"	5"	18	600
SSHSLT148		48"	18"	5"	20	600
SSHSLT160		60"	18"	5"	22	600
SSHSLT236		36"	24"	5"	19	600
SSHSLT248		48"	24"	5"	21	600
SSHSLT260		60"	24"	5"	23	600

